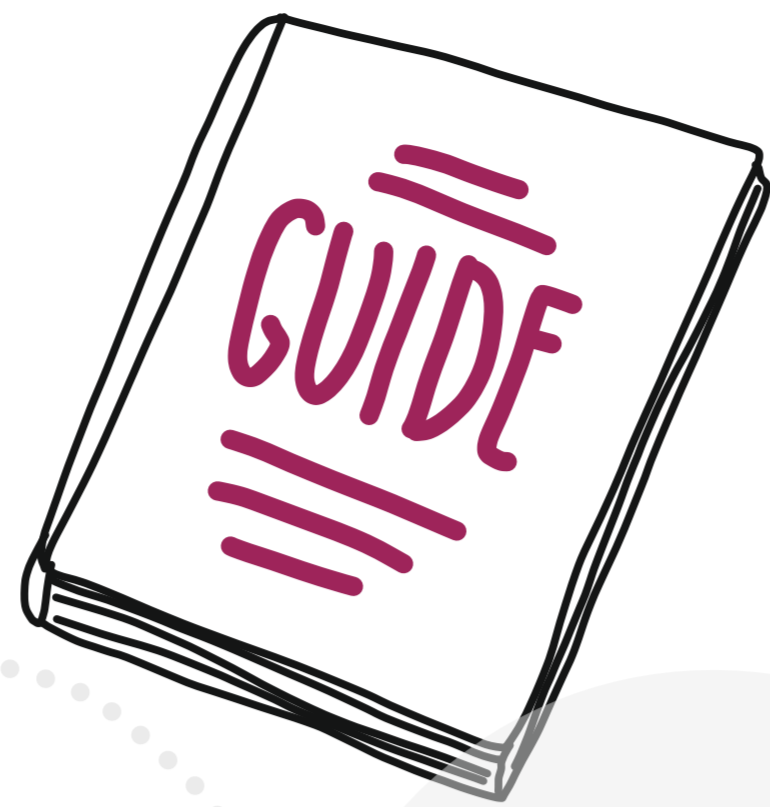


FREELANCER'S



TO THE PRIVACY

USE TWO-FACTOR LOGINS

HAVE A UNIQUE PW FOR EACH LOGIN

STRONG PASSWORDS

AVOID GMAIL/FB LOGINS FOR OTHER APPS

USING PASSWORDS GENERATOR

REMOVING OLD PW FROM BROWSERS

USE FIREFOX SEND

USE PROTONMAIL AND PASSWORD ENCRYPTION

ENCRYPTION

SHARING WORK RELATED PHONE NUMBER OR EMAIL

DELETE IRRELEVANT ACCOUNTS

ONLINE IDENTITY

ASK TO OPT OUT UNNECESSARY INFO

USE SCREEN PROTECTORS

USE SAFE BROWSERS

KEEP ONLY NEEDED FILES

ENCRYPT DATA

HAVE PASSWORD

DO NOT LEAVE OR LOSE LAPTOP

DATA STORAGE

REMOVING META-DATA BEFORE POSTING

AVOID POSTING FACES, TAGGING, GEOLOCATING

DO NOT POST PRIVATE INFO

PRIVATE PROFILE VS. PROFESSIONAL PROFILE

SOCIAL MEDIA

SET SETTINGS TO MAX PRIVACY

USE VIRTUAL CARDS / CASH WHEN POSSIBLE

DELETE CARD INFO FROM BROWSERS

DO NOT MAKE PAYMENTS IN PUBLIC PLACES

ONLINE PAYMENTS

USE ONLY ENCRYPTED DISCS

NEVER USE DISCS IN OTHER COMPUTERS

ALWAYS FORMAT DISCS AFTER USING

EXTERNAL DISCS

DIFFERENT BROWSERS FOR DIFFERENT PURPOSES

VPN ON (ESPECIALLY ON PUBLIC WIFI)

USING FIREFOX/TOR/BRAVE + MAX PRIVACY SETTINGS

BROWSING

SET UP EVENT RELATED RULES: PHOTO, REGISTRATION, TAGGING...

DO NOT COLLECT OR STORE SENSITIVE DATA

SENSITIVE DATA

AT LEAST 6 DIGIT PW + BIO

DOUBLE CHECK APP SETTINGS

TURNING WIFI/BLUETOOTH OFF

DATA ARCHIVING ONCE A MONTH

MOBILE DEVICES

IF NEEDED - ENCRYPT EMAILS VIA PROTON MAIL

WORK EMAIL VS. PERSONAL EMAIL

EMAIL